



Enjoy, Explore and Learn

School Prospectus



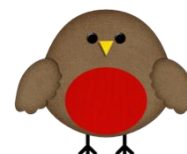
2019-20



Contents



Welcome
School Information
School Aims and Values
School Organisation
School Governance
The School Day
Attendance
School Meals
Our Curriculum
Uniform
Community Links
Communication
Admissions Procedures and Induction
Safeguarding
Further Information



Welcome

On behalf of the governors, staff, children and myself it gives me great pleasure to welcome you to Harnham Infant School.

I was appointed Headteacher in Spring 2017 after nearly 7 years as Deputy and I can honestly say that I wouldn't want to be anywhere else. This is due to the children being so wonderful, I am very proud of them all!

Here at Harnham Infant School we want every child to **'enjoy, explore and learn'** and make the best possible start to their education. We want our children to become well-rounded, responsible citizens with the skills necessary for dealing with life in our diverse and ever-changing world. And of course, we want them to have fun!

We are a thriving three-form entry infant school, set just outside the city of Salisbury. We have a large catchment area and last year our children came from 12 different pre-school settings.

We have high expectations and challenge our children to make the best possible progress, providing support for every pupil, whatever their needs. We offer a curriculum which is broad and balanced, interesting and fun. We expect children to work hard but believe it is very important that children enjoy coming to school and achieve personally, socially and emotionally as well as accomplishing academic success.

The partnership between home and school is very important to us. We respect that parents are the child's first educators and we work alongside parents to ensure the children have a smooth transition into 'big' school. During the academic year, we provide plenty of opportunities for parents and carers to get involved in school life, with regular 'coffee and chat' mornings, 'stay and play' sessions and parenting workshops throughout the year.

We are proud of our school and its caring, happy atmosphere, however we are constantly seeking ways to improve. We seek the views of parents and children and ask for feedback and ideas to support us in making Harnham Infant School an even better place to learn. Please take a look at our School Development Plan to see what we are trying to improve this year.

We are always delighted to welcome visitors, so do come and have a look around the school and meet the children and staff. By visiting, you will be able to see our vision and values in action, and hopefully get to know the 'Harnham Infant Way'.

With best wishes,

Natasha Dorrington
Headteacher



School Information

We are a happy and thriving infant school situated on the edge of Salisbury, where we enjoy lovely grounds and great links to this beautiful historic city. We take pride in our family atmosphere and work hard to create an environment where the children are encouraged to 'enjoy, explore and learn'.

Situated in Harnham, on the southern side of Salisbury, the school was built in 1966. We provide education for children from the September after they turn four until the year in which they turn seven. We have 9 main classrooms, a school hall, a large library, the den, plus several other important features, such as a breakfast club and after school club facility, other meeting rooms and a cooking room. We have two playgrounds for the children to use, an exclusive outdoor classroom for the Early Years children, as well as extensive grounds at the back of the school, which are used for Forest School sessions.

We currently have 210 children on roll, taught in single aged classes. The classes are named after animals and the animals work together in families. This means children get to know each other and enjoy opportunities to share learning with others outside of their own class and year group.

Our school website is a great source of information about our school. Here you will also find copies of many of our school policies, including; (amongst others)

- Admissions
- Equality
- Child Protection and Welfare
- Special Educational Needs
- Anti-bullying
- Behaviour management
- Code of Conduct



School Aims and Values

Our school motto is:

'Enjoy, Explore and Learn'

Our Vision Statement says:

Harnham Infant School is a happy and caring place where we value and support the uniqueness of every child, take account of diversity and promote equality and inclusion, to enable all to succeed.

Our School Values and Aims are:

- **Kindness** - we aim for all members of the school community to act in kindness and care towards each other, valuing the partnership between home, school and the wider community.
- **Independence** - we instil independence, a positive attitude and confidence to enable children to be active members of a constantly changing society.
- **Resilience** - we provide a learning environment that is stimulating, inclusive and reflects the children's achievements and encourages them to continuously develop their learning.
- **Creativity** - we encourage an enthusiasm for learning through a creative, exciting curriculum and challenge all to achieve high standards.
- **Respect** - we encourage a high standard of behaviour and expect everyone to show respect for themselves, others and the school environment.
- **Active** - we aim for children to establish an active lifestyle, making choices that are healthy for their bodies and their minds.



School Organisation

School Staff		
Headteacher	Miss Natasha Dorrington	
Deputy Headteacher	Mrs Laura Pike	
SENDCo	Mrs Lindsay Jackson	
Class	Teacher/s	Teaching Assistants
EYFS Robins	Mrs Bethany Jones	Mrs Wendy Ferris
EYFS Ladybirds	Miss Jessica Swaine	Mrs Shelley Bruss
Year 1 Squirrels	Mrs Karen Ainley	Mrs Donna Ansell Mrs Laura Kingsley-Smith
Year 1 Woodpeckers	Miss Alice Hibberd	Mrs Nelly Sanchez
Year 1 Bees	Miss Sophie Spellar	Mrs Carol Wilson
Year 2 Badgers	Miss Fawn Blair	Mrs Cheryl Willshire
Year 2 Owls	Mrs Amanda Young	Mrs Anna McGinley
Year 2 Dragonflies	Mrs Nathalie Allexant-Rowland	Mrs Teresa Salmon Mrs Amanda Wyatt Mrs Sarah Shaw Mrs Andy Thorndike
PPA Cover Teacher	Mrs Sarah Shaw	
ELSA support	Mrs Lorraine Batchelor	
Forest School Practitioner	Mrs Abigail Robinson	
Wrap Around Care		
Breakfast Club	Mrs Abigail Robinson (team leader)	Miss Lisa Shaw Mrs Niki McSweeney
After School Club	Miss Lisa Shaw (team leader)	Miss Tracy Greenough
Lunch time team		
Midday Supervisors	Miss Lisa Shaw (team leader) Miss Laura Hicks Miss Tracy Greenough Mrs Elaine Russell Mrs Hayley Ganley	Mr Rob Russell Ms Kate Colgrave Miss Melanie Galpin Mrs Diana Henderson
Catering Staff	Ms Rachel Trendell	
Administrative Team		
School Business Manager	Mrs Debbie Salberg	
Admin Officer	Mrs Helen Bowyer	
Admin Assistant	Miss Emma Cook	
Finance Officer	Mr Andy Tyrer	
Premises Team		
Caretaker	Mr Ray Mankin	
Cleaners	Mrs Elaine Russell Mr Rob Russell	

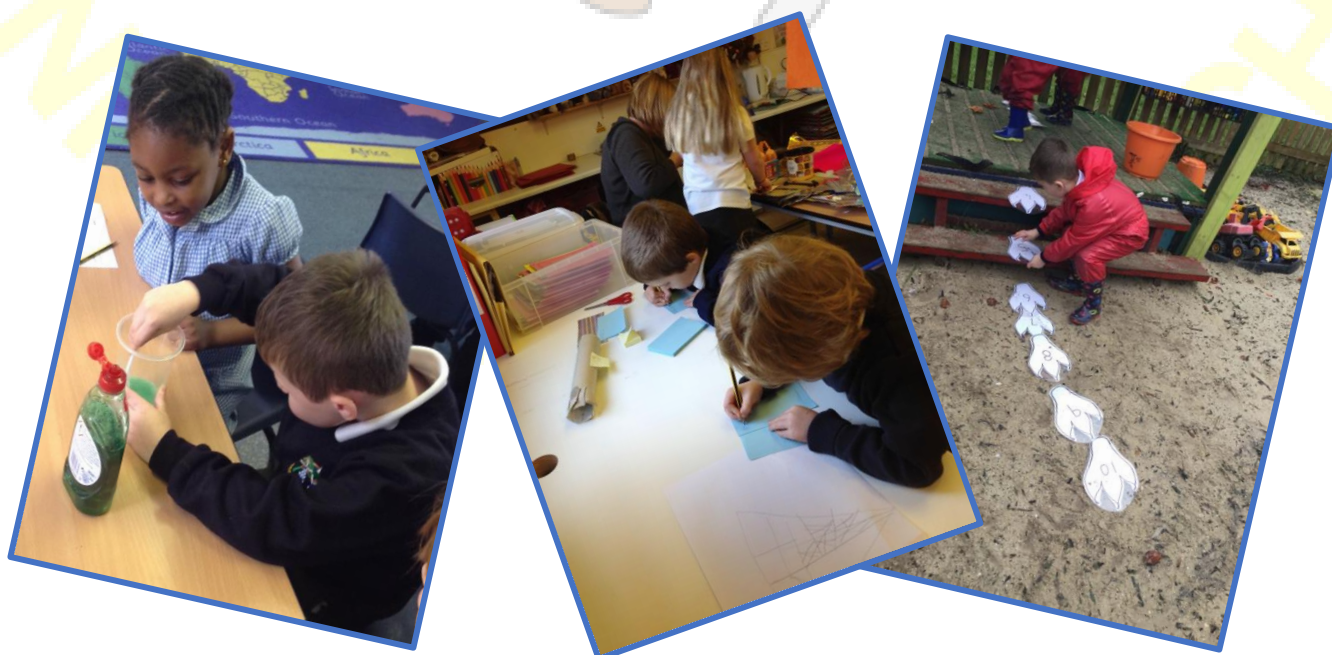
School Governance

Our governing body has the responsibility to oversee the effective management of the school. They are a supportive group of people who act within the framework and legislation given by the government and local authority to be the school's 'critical friend'. The governors seek to work as a team to keep a close relationship with the school. They do this by holding full governing body meetings at least once per term, working in sub-committees to focus on specific issues (finance, curriculum, safeguarding and health and safety), by attending training to keep our knowledge up to date and by being present within the school to meet with teachers and attend school events.

Our current school governors are:

Headteacher	Miss Natasha Dorrington
Co-opted Governors	Mrs Clare Churchill (Vice Chair) Mrs Laura Pike Mrs Philippa Sirl Mr Dennis Casey
Local Authority Governor	Mrs Beth Evans (Chair)
Parent Governors	Mrs Sian Wright Mr Shree Waydia Ms Efrim Niccals Mrs Lynn McGrane Mrs Linda Sawyer
Staff Governor	Mrs Lorraine Batchelor
Clerk to the Governors	Mrs Teresa Salmon

The minutes from the meetings are available for inspection at the school entrance.



The School Day

Time	
8.30	Gates open
8.45	Classrooms open
8.55	Registration
9.00	Lesson time
10.30	Morning break
10.45	Lesson time
12.00	Lunchtime
1.00	Lesson time
3.05	Home time

Children will need to arrive at school and wait in the playground with their parents. When the classroom doors are open, children are welcomed in to start their day. Safety and security is our highest priority and so the gates will be locked at 8.55am and children arriving after this time will need to be signed in at the school office.

Please note that the children may also have an afternoon playtime at the class teachers' discretion.

There is no access to the school site, or on Saxon Road, for parents' cars. If you are travelling to school by car, please park in a nearby road and walk in.

Before and After School Care

Harnham Infant School runs a breakfast club every day from 7.45am until school starts and the after school provision runs every day from 3.05pm until 6.00pm. This takes place in a dedicated room at the school with easy access to additional play space in the hall and outside. Children will need to register to attend both of these clubs through the school office.

Junior School children are also welcome to attend both the breakfast and after school clubs.

We also have links with other before and after school club providers who will drop off and collect children too.

For children in year 1 and 2, there are a range of after school extra-curricular activities on offer to them, which vary from term to term.

Attendance

If your child is poorly and unable to attend school, please telephone or email the school office or class teacher on the first and subsequent morning of absence. You can find advice about school absence and illness on our school website.

If you need to take your child to a medical or dental appointment during the school day, please fill in an absence form at the school office. This enables us to complete our registers properly.

If you intend on taking your child out of school for a holiday or days out of any kind, please fill in a request for absence form available from the office or to download from our website. Please note that we cannot authorise such an absence and it could result in a penalty notice being issued.



School Meals

Every infant school child is currently entitled to a free hot meal. These are prepared and cooked at the junior school site by the catering company (HC3S) and brought over each lunchtime. There is a lot of choice and good variety. The menu can be found online at www.hants.gov.uk/hc3s

Should your child have any specific dietary requirements, we are usually able to cater fully for them. Please ensure you let us know.

You are also very welcome to send a packed lunch in with your child. Please note that we are a nut-free school due to some severe allergies and we discourage sweets, chocolate and sugary drinks.

Every child in the school is provided with a piece of fresh fruit or vegetables as a mid-morning snack. If you would like your child to have milk, this can be ordered online at www.coolmilk.co.uk

Our Curriculum

We all know and understand that children learn in a variety of ways and at Harnham Infant School we work hard to create a curriculum that is exciting, engaging and that meets the specific learning needs of all children.

The Early Years Foundation Stage

During their first year of formal schooling, children finish their early years foundation stage curriculum. This is a very play based and practical curriculum which allows children to explore the seven key areas of learning, in high quality indoor and outdoor learning environments.

The key areas of learning are:

- Personal, Social and Emotional Development
- Communication and Language
- Physical Development
- Literacy
- Mathematics
- Understanding the World
- Expressive Arts and Design



The teachers work together to plan lessons around these themes, using children's own ideas too.

The National Curriculum

Throughout year one and two, children follow the key stage one National Curriculum. Teachers organise the learning into manageable chunks, often through exploring a theme or topic. They carefully plan lessons that match children's attainment levels and interests, and provide them with learning experiences that help them to build skills, knowledge and develop a thirst for learning.

We often accompany our learning with different trips and educational visits as well as arranging for visitors to come in to school. We aim to make the most of our locality and use the wonderful facilities we have available to us in Salisbury.

The children will attend a school assembly each day, in line with government policy. As we are a community school, these are not often linked to a specific religion or faith group.

If you have any questions about our school curriculum, please do come and ask.

Equality and Special Educational Needs

At Harnham Infant School we do not discriminate against anyone because of their sex, race, colour, religion, nationality, disability, ethnic or national origins. We promote fairness, respect and justice in all that we do. We ensure that all pupils have equal access to the full range of educational opportunities provided by the school. The school responds to the needs of pupils to ensure full access to the school and we strive to remove any barriers to learning to provide a wholly inclusive learning community.

Our school has a named Special Educational Needs Coordinator; Mrs Lindsay Jackson, who helps teachers to assess, oversee and identify the provision needed for any children who may need a little extra support to help them with any area of learning.

You can read both the Equality and Special Educational Needs policies on the school website.

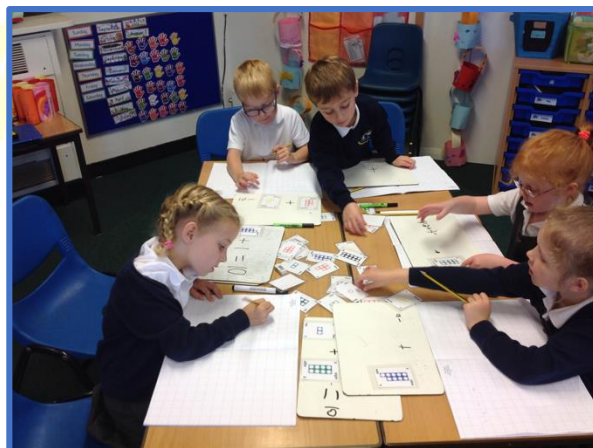
Positive Behaviour Management

We aim to create an environment where all children feel valued, supported and encouraged. We believe in creating a calm and happy classroom and set school rules that are clear and easy for the children to follow.

We always praise children for making good learning and behaviour choices. We use a reward system that is highly motivating for all children and celebrate with them in their successes.

Children are taught that mistakes do happen and if they choose to make a poor learning or behaviour choice then there is a consequence for their behaviour and children are given the opportunity to make it better.

You can read more in the Positive Behaviour Management Policy available on the school website.



Uniform

We take pride in the way we present ourselves at Harnham Infant School and all pupils are expected to comply with our uniform requirements.

Uniform	PE Kit	Forest School
<ul style="list-style-type: none"> ✓ Navy sweatshirt or cardigan ✓ White t-shirt embroidered with school logo ✓ Grey skirt, pinafore or trousers ✓ Black school shoes 	<ul style="list-style-type: none"> ✓ Navy shorts and tracksuit bottoms ✓ White t-shirt ✓ Trainers or plimsolls ✓ Spare socks ✓ Drawstring bag to keep it all in 	<ul style="list-style-type: none"> ✓ Waterproof coat ✓ Waterproof trousers ✓ Wellington boots ✓ Bag to keep it all in.

In the warmer weather girls can wear blue checked dresses should they wish to do so. All items of clothing must be named so that it can be returned to you should it be misplaced.

We ask that children do not wear jewellery of any kind. If your child has their ears pierced, stud earrings only may be worn. These must be covered or removed for PE.

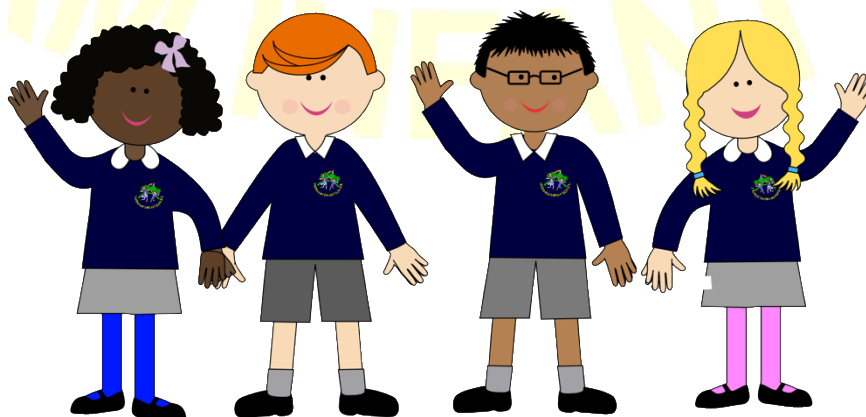
School Uniform is available from:

Kids Klobber
20 Endless Street
Salisbury
SP1 1DP
Tel: 01722 321200

Kids Klobber also sell school book bags



If your child is in receipt of the pupil premium grant then school uniform may be provided for you.



Communication

We know that parent partnership and engagement is a vital ingredient to your child's school success. We have various forms of communication between parents and school which aim to keep you informed about your child's progress and development and allow parents the opportunity to share their ideas and feedback with us too.

These include:

- Being available daily either on the gate or playground at the beginning and end of each day
- An informative and detailed school website, including class blogs
- Sending home weekly newsletters
- Sending home termly curriculum letters and learning maps
- Sending email and text message updates to parents
- Providing opportunities for parents to get involved e.g. by attending a 'Stay and' session
- Giving parents opportunities to attend school shows, museums, sports days etc.
- Holding regular 'Coffee and Chat' sessions for parents
- Conducting parent questionnaires to ascertain valuable feedback
- Organising regular parent and teacher evenings to discuss children's progress and next steps for learning
- Sending home summative written reports about your child's progress and development

Community Links

The school plays an active part within Salisbury, getting involved in community events in the city and beyond. We have a number of feeder pre-schools and nurseries, who we share good links with.

We share our site with Puddleducks Pre-School, where some of our children transition from. We have good links with the pre-school and regularly create opportunities for shared learning between the pre-school and the infant school.

We also share the school site with Harnham Junior School, where the majority of the children transition to at the end of year 2. We aim to ensure that the children have a very smooth transition to the junior school by planning a very comprehensive programme of activities in the summer term such as buddy reading, shared PE lessons and playing maths games together, all before 'bump up day' when the children will spend the whole day getting to know their new school. The class teachers meet to complete a thorough handover too.

Admission Procedures and Induction Processes

Prospective Parents are always welcome to come and have a tour of the school and an opportunity to ask questions before, during or after making an application. To apply for a place at Harnham Infant School, you can do so by completing a form available from the school office or by applying online. Here you will also find information about deadlines and procedures.

For pupils entering school at the start of the reception year, we have a specific induction program to ease your child's transition in to school. Once a school place has been offered and accepted, we write to parents to outline the transition timetable and invite parents and children to several specific events and settling in sessions.

For pupils joining part way through the year and to other year groups, families are still invited to visit the school together and to meet their new class teacher. We aim to gain a handover from the previous setting and understand a child as fully as possible before they begin school with us.

At the end of each academic year, the teachers and senior leadership team will make a decision as to whether mixing up the classes for the next year group will be in the best interests of the children, both socially and academically.

Safeguarding

Harnham Infant School is committed to safeguarding and promoting the welfare of children. All staff and volunteers are trained in safeguarding procedures and fulfil local and national expectations.

The Designated Safeguarding Lead is Miss Natasha Dorrington (Headteacher)

The Deputy Designated Safeguarding Leads are Mrs Laura Pike and Mrs Lindsay Jackson

The governors responsible for Safeguarding are Mrs Philippa Sirl and Mr Denis Casey

Please see the school website for the Child Protection Policy



Further Information

You can find a wealth of information on our school website.

We believe our children and families are our best ambassadors so do make an appointment to see us in action and to ask any remaining questions that you may have.

Harnham Infant School
Saxon Road
Harnham
Salisbury
Wiltshire
SP2 8JZ

01722 327338 (telephone)
01722 341004 (fax)

Email: admin@harnham-inf.wilts.sch.uk

Website: www.harnhaminfants.org.uk

